

zippie®

Kid Kart™

Contemporary style with user-friendly functionality.



About Kid Kart

Kid Kart offers eye-catching contemporary styling and clinically sophisticated yet user-friendly components to give you the confidence that Kid Kart is the right product choice for you.

The positioning shell and seating system on the Xpress and TLC offer a 65° tilt range, extensive adjustment capabilities to accommodate growth, and options for recline and transit.

The Mighty Lite is an ultra lightweight portable chair that's perfect for people on the go.

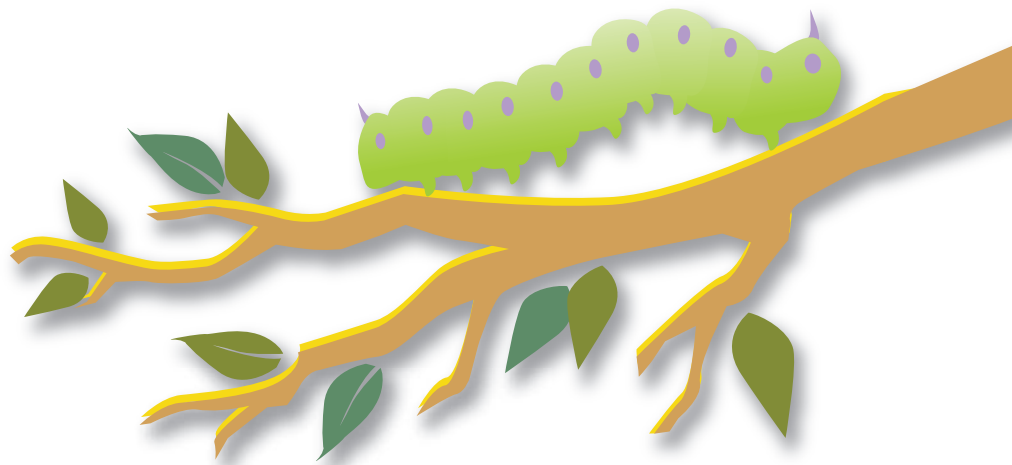


Kid Kart Xpress™

Kid Kart TLC™

Kid Kart Mighty Lite™





Seating Components

On the Xpress and TLC

"T" Back available in various sizes to accommodate children's needs



Kid Kart swing away lateral support push button release

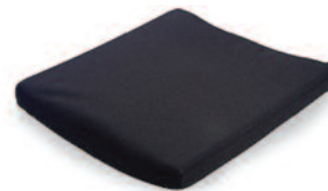
- Adjustable contour cushion (shown)
- Centrally adjustable pre-ischial ledge
 - Undercut front ledge
 - Adjustable foam wedges for lateral thigh and knee supports
 - Adjustable foam wedge for medial knee/thigh support
 - Ability to attach lap belt at 45° or 90°
 - Seat well foam options conform med, med/soft or soft



- Standard seat cushion
- Medium density contoured foam
 - Built in 3" lateral hip & thigh supports
 - Medial thigh contour
 - Fixed ischial ledge



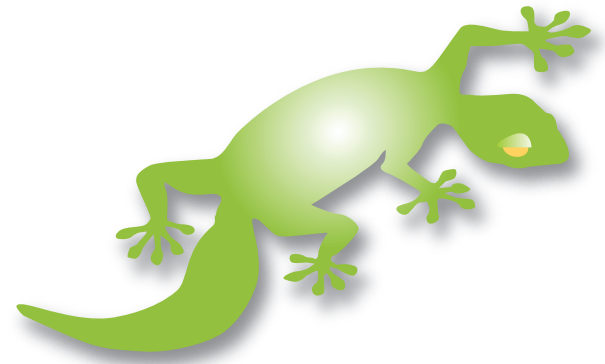
Footstraps



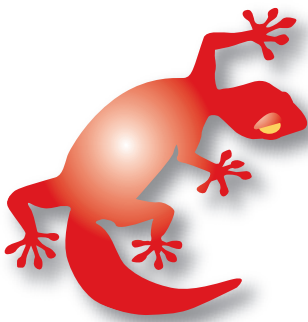
Standard cushion without lateral supports



Kid Kart Xpress



Kid Kart TLC



Portable: Folds with or without the seating system.



Kid Kart TLC in reverse seat configuration

Color Options

All canopies available in Cross Over or Center Stripe style.
See opposite page for pictures. Cross Over option shown below.



Purple



Orange



Soft Pink



Navy Blue



Green



Butterflies (with Purple Highlights)



Red Race Flags (with Red Highlights)

Xpress and TLC Base Accessories



Height Adjustable Booster Base



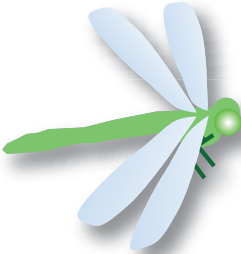
Rain Cape



Upper Extremity
Support Tray

I.V. Pole/O₂ Tank Holder Option and Vent Tray

Kid Kart Mighty Lite



Easy to clean, quick drying upholstery available in navy blue or raspberry colors.

Easy seat angle adjustment 15° or 22°

Four optional transit tie down points

Standard 10" rear wheels and 8" front caster wheels.

Easy to fold for lightweight, convenient transport.



Navy blue upholstery



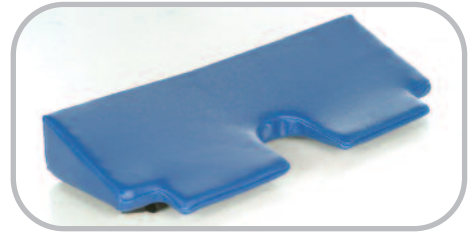
Mighty Lite Accessories



3-Point Positioning Belt:
Increases pelvic stabilization.



Canopy: Height adjustable canopy provides cover over the headrest and includes a flap-covered observation window.



Foam Wedge: Modify positioning and increase stability with this wedge insert.



H-Harness & Padded Covers:
Imitation lamb's wool increases comfort while the H-shape of the harness provides additional support.



Utility Bag: Keep essentials items close at hand with this roomy, zippered bag.



Headrest Extension: Fully adjustable in both width and height.

- Black nylon fabric is standard
- Navy or Raspberry Cordora is available as a no charge option.

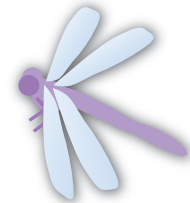
Upholstery Colors:



Navy



Raspberry



Specifications



| | Xpress | TLC |
|---------------------------|----------------------------------|----------------------------------|
| HCPCS Code | E1232 E1234 (without seating) | E1232 E1234 (without seating) |
| Tilt Range | 20° anterior 45° posterior | 0° to 30° |
| Recline Range | 0° to 45° | 85° to 130° |
| Footbed Adjustment | 70° to 170° | 90° to 160° |
| User Weight Capacity | 55 lbs. | 75 lbs. |
| Weight | 34 lbs | 43 lbs |
| Shell only | 16 lbs | 22 lbs |
| Base only | 18 lbs | 21 lbs |
| Width | 24" | 26.5" |
| Handle bar height | 36" to 41" | 37" to 41" |
| Folded Dimensions | 24" x 28" x 20" | |
| Shell only | 16" x 19" x 14" | 12.5" x 18" x 28" |
| Base only | 24" x 28" x 15" | 26.5" x 14" x 28" |
| Booster base height range | 10.5" - 24" | N/A on TLC |
| Feeder base height | 24" | 24" |

| | Mighty Lite | | | |
|-------------------------|------------------------------------|--------|--------|-------|
| HCPCS Code | E1236 | | | |
| Frame color | Black | | | |
| Upholstery | Navy or Raspberry | | | |
| Adjustable Seat angle | 15° and 22° | | | |
| Adjustable Back angle | 85°, 90°, 95° | | | |
| Footrest position range | From 4" up to 26" in ¾" increments | | | |
| User Weight Capacity | 150 lbs | | | |
| DIMENSIONS: | | | | |
| Frame Size | 12 | 14 | 16 | 18 |
| Seat/Back Width** | 11.75" | 13.75" | 15.5" | 17.5" |
| Seat Depth*: Minimum | 11.5" | 13" | 13.5" | 15" |
| Seat Depth*: Minimum | 13.5" | 15" | 15.5" | 17" |
| Top of Backrest to Seat | 22.25" | 21.25" | 23.75" | 23.5" |
| Headrest Extension | 7" | 7" | 7" | 7" |

